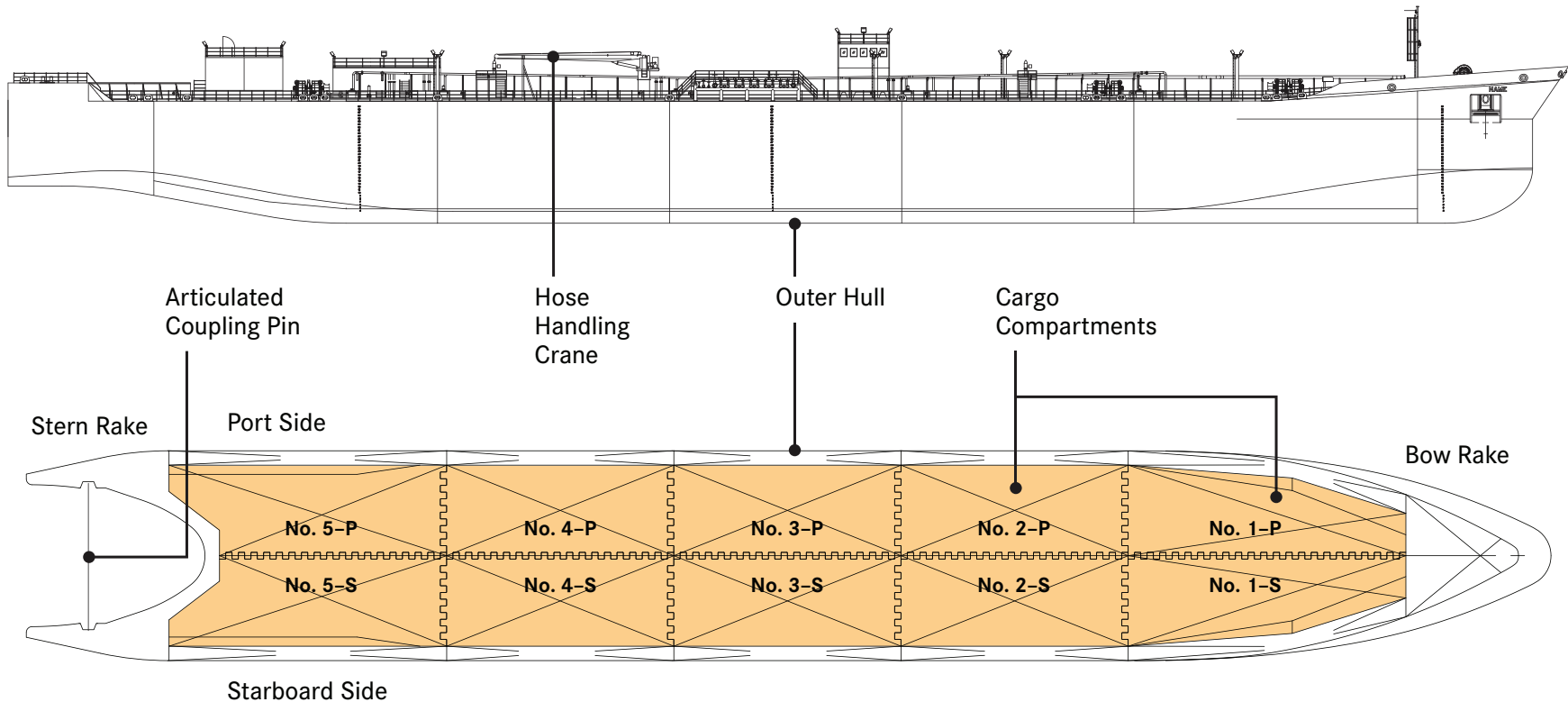


155k-BBL Tank Barge

Tank Plan and Capacities



Cargo Tanks

■ Epoxy Coated

(Continued on next page...)

155k-BBL Tank Barge

Tank Plan and Capacities, Cont'd.



Cargo Tank Summary

Tank	Frame	S.G.	Capacity @ 100%		Capacity @ 98%	
			BBL	LT	BBL	LT
Cargo Tank No. 1-P	6-17	1.025	16,292	2,612.91	15,966	2,560.66
Cargo Tank No. 1-S	6-17	1.025	16,292	2,612.91	15,966	2,560.66
Cargo Tank No. 2-P	17-26	1.025	15,676	2,514.19	15,363	2,463.91
Cargo Tank No. 2-S	17-26	1.025	15,676	2,514.19	15,363	2,463.91
Cargo Tank No. 3-P	26-35	1.025	15,676	2,514.19	15,363	2,463.91
Cargo Tank No. 3-S	26-35	1.025	15,676	2,514.19	15,363	2,463.91
Cargo Tank No. 4-P	35-44	1.025	15,676	2,514.19	15,363	2,463.91
Cargo Tank No. 4-S	35-44	1.025	15,676	2,514.19	15,363	2,463.91
Cargo Tank No. 5-P	44-55	1.025	16,149	2,589.94	15,826	2,538.14
Cargo Tank No. 5-S	44-55	1.025	16,149	2,589.94	15,826	2,538.14
Total			158,938	25,490.84	155,759	24,981.06